



BOY SCOUTS OF AMERICA®
CHICKASAW COUNCIL

TWIN BANKS S.T.E.A.M. DAY CAMP

June 17-21 | 9am-3pm

Mud Island
101 N. ISLAND DR.
MEMPHIS, TN. 38103

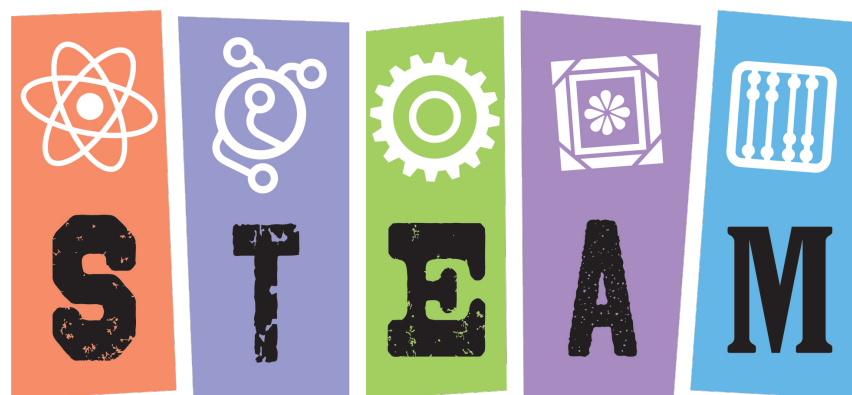
FEATURED ACTIVITIES:

Scientific Experiments
Earn Cub Scout
Nova Award
Catapults
Games & Crafts

COSTS:

\$75 through May 31
\$85 after May 31
\$2.50 per day for
before and after care

t-shirt, camp patch and snacks included





TWIN BANKS STEAM DAY CAMP

LEADER'S GUIDE

JUNE 17 – 21, 2019 9:00 AM – 3:30 PM

MUD ISLAND

101 N. ISLAND DR.

MEMPHIS, TN. 38103

The Twin Banks District of Chickasaw Council is looking for boys and girls entering first through fifth grades to explore and discover the newest and most exciting adventure of Cub Scouting.



Featured Activities:

Earn a Cub Scout Nova Award
(Participating in STEAM Activities)

Build & launch Rockets

Catapults

See Saws

Various Scientific Experiments

Games & Crafts

Guest Speakers

Tour of a Lab & more

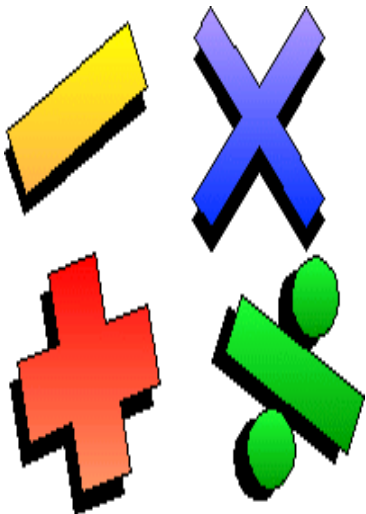
Plus

T-shirt, Camp Patch, and Snacks

The Cost: \$75.00 until May 31, 2019

\$85.00 after May 31, 2019

\$ 2.50 per day for Before Care
and/or After Care



Establish the position of a Pack Day Camp Coordinator for your Pack and put him/or her on the Information Distribution List of the Day Camp Director. The Pack Day Camp Coordinator is the primary point of contact that the Day Camp Director will use to distribute information.

Information and sign up forms plus rosters and volunteer forms are ready to begin flowing to the Packs for distribution as soon as each Pack informs us of the contact information for the Pack Camp Coordinator. If further assistance is required, then please contact Audrey Lott, Day Camp and Program Director, lottsp@bellsouth.net.

If camp fees are paid before June 1st, the fee will be \$75.00. Camp fee after May 31st will be \$85.00. Included in this fee is: a camp T-shirt, Day Camp Patch, snacks, insurance, and lunch for the Cub Scout and ONE PARENT on that Friday. Any additional family members will have a cost of 2.00 per family member to eat. There is a separate fee for before and after care of \$2.50 per day.

Activities include games, crafts, Scout skills, Steam experiments, and much more in a combination of indoor and outdoor activities. Each day will feature an opening and closing ceremony with an exciting daily Scout Theme reinforcing what the Scouts learn during their regular pack and den meetings. Their minds will be stimulated by our guest speakers during the lunch break.

What to Wear

Cubs and leaders are encouraged to wear a camp tee shirt (for identification and security) and either shorts or jeans with belt loops. Camp tee shirts for the cubs are included in the camp registration fee. Adult volunteers must work 3 days or more to qualify for a free T-shirt (however we will have a few for purchase). Leaders are encouraged to order a camp tee shirt upon registration if they don't qualify for a free one. This allows us to quickly assess that we have no unaccounted visitors. Leaders not purchasing a T-shirt will need to wear and display an armband provided by camp directors. Everyone needs to wear comfortable tennis shoes and socks. These are a must to take part in the camp's physical activities. If necessary, label all personal items brought into camp. **Sandals and open-toed shoes are not permitted.**

Age Requirements

To participate, boys and girls must be Registered Scouts ages 6-10 years old and going into the first through sixth grades (scouts who have completed kindergarten through fifth grade by June 1). Scouts who have completed fifth grade and/or their Arrow of Light are encouraged to attend Boy Scout Summer Camp since we will concentrate on Cub Scout Achievements but of course are welcome to attend camp with us.

How Is Day Camp Organized

Camp Staff

The camp is staffed by volunteer adult leaders and Boys Scouts who have been specially selected and trained to work at day camp. The camp staff is here to maintain the camp, provide the camp program and to support the packs. If you need help or have any questions at any time, please feel free to ask any of the staff members. Our job is to help you and your cubs have a great camp.

All of our staff is donating their time to provide your cubs a top quality day camp. Many of the adults and all the youth staff are using their vacations to work at the camp. We ask that your cubs appreciate and treat each staff member with respect. Should you have any problems with a staff member please contact the Camp Directors.

Parent Information

The safety and wellbeing of your children is the first and foremost consideration in the conduction of Day Camp. Parents are welcome at Day Camp at any time. Parents may bring lunch and eat with their Scouts or show up to watch what their Scouts are doing and take photos. However, any person visiting the camp MUST sign in with the Day Camp Office and obtain a visitors badge. The scouts and leaders are trained to report any person on the camp grounds without a proper ID badge.

We will have Sign-In and Sign-Out procedures. At this time, we anticipate that it will take an additional 5 minutes in the morning and in the afternoon to drop off and pick up your scouts.

Each morning that a scout is dropped off at camp and each afternoon at pickup an adult must sign the sign-in/sign-out sheet located at the registration table for the Scout's Day Camp Den. A scout will not be released from the area until an adult has signed the sheet for release and the den leader has verified authorization.

Keep in mind that it will be critical for sign-in/sign-out that the parents must provide the names of any person authorized to pick up your Scout after Day Camp each day. **SCOUTS WILL NOT BE RELEASED TO ANY PERSON UNLESS WE HAVE WRITTEN AUTHORIZATION IN ADVANCE!**

If you car pool your Scouts, we will have special procedures in place. Please see your Pack Day Camp Coordinator for these procedures.

Day Camp is a 100% volunteer undertaking. We have no paid staff positions. As a result, we depend on the parents to support us as Day Camp Den Leaders.

We will operate according to Boy Scouts of America policy, the National BSA Camp Guidelines and The Guide to Safe Scouting which all require 2 deep leadership. We also follow the one volunteer per five scouts guideline beyond the two deep leadership requirements so if your pack has more than ten scouts participating then additional leadership is required.

Total scout participation number for the camp will be contingent on the two deep leadership policy.

Campers

We love Tiger Cubs! It is such fun to watch them enter into the Scouting Experience. Tiger Cubs are our young Scouts who have graduated Kindergarten and are entering first grade. However, Cub Scout regulations require that our Tigers must have a parent or guardian (their Akela) present at all times and to participate in all activities with them—they need to be a year older to attend on their own. If you have a Tiger Cub, then you have one of the Scouts who brings joy to the hearts of Scout Leaders as we watch them enter Scouts however, you or somebody authorized by you, must be present with them at all times.

The scouts attending will be organized into Day Camp Dens according to age/rank and our target is for about 10 scouts per den with 2 volunteer adult den leaders.

Every effort will be made to keep scouts of a given rank and pack together in a day camp den.

We also intend to have Wolf, Bear, and Webelos Specific activities.

It is critical that the Akela indicate on the registration form the grade that the Scout will be in when he/she returns to school in the Fall of 2019. This information will allow us to sort him/her into the correct age/rank group. Incorrect information on this line will result in your Scout being placed into the incorrect DAY CAMP DEN for his/her rank. Please double check this line before submitting your registration.

Registration

All registrations should be handled through your Pack Day Camp Coordinator. See below for individual registrations.

Everyone attending day camp for even one day must complete a Day Camp Application and a Personal Health and Medical Record (Class 1) form. Please register only one person on each application. A medical record form for each scout and leader **MUST** be on file with our Day Camp Medical Advisor. Copy necessary forms and submit a Day Camp Application for every scout and adult volunteer. A Pack Summary Sheet must accompany the Day Camp Application and the Class 1 Personal Medical Records form when each pack registers its scouts.

T-shirt orders will be based on the forms that are turned in by the deadline. In the event that there is no size listed on the forms – we will do our best to get a T-shirt to the Scout or volunteer; however, we cannot guarantee the size or availability. Adult volunteers must work 3 days or more to qualify for a free T-shirt (however we will have a few for purchase). T-shirt availability projected on the Monday of day camp can only be guaranteed for applications turned in by noon May 31, 2019. T-shirts for registrations completed after that date will be provided as soon as they become available.

Please remember that Day Camp Applications will not be considered complete and accepted until the Day Camp Application form is filled out completely and a Class 1 Medical Form is also completed and turned in.

Registration forms and payment may be turned in at Cub Scout Round Table on Tuesday April 9, 2019 and May 7, 2019. Both meetings are from 6:30 PM until 7:30 PM.

Pack level applications may also be turned in to the Program Director. Please e-mail to make arrangements if you cannot turn them in at Roundtable.

Individual application should be turned in at the Pack level. If you find that you need to turn in an individual application, please email the Program Director with your name and contact information.

You can also pay for your day camp thru the Scout Service Center or by going onto double knot.

Check-In/Out

It is extremely important that the camp staff know exactly who is in camp at all times. To make sure that all scouts, leaders, and visitors are accounted for we will be using the following check-in and check-out procedures. Please help us by following the procedures each day of camp.

Check-In: Pick up your roster and any notes we have for you. Each morning you and your scouts should arrive at camp together or meet at a designated area before entering camp. Check-in will be done by pack if at all possible. Late or early arrivals must be checked-in by a parent or guardian at the camp check-in table. Please allow yourself ample time for checking in to arrive at opening ceremonies on time.

Check-Out: One leader per pack will check out those leaving camp at the end of the day. The leader should not leave camp until everyone from your group has been properly checked-out. Scouts are not to be left waiting for a ride home without the Camp Director or District Scout Executive being informed. Anyone leaving camp early must be signed-out at registration by the proper adult listed on his registration form. Please let everyone know that boys will not be released early without the permission of the Camp Director or District Executive and a receipt of a written authorization by guardian. (PHONE CALLS will not be acceptable authorization.)

Medications

Scouts who need to have medication administered will have to have medicines turned in on the first day of camp to the Nurse. Written instructions must accompany the medicine, the medicine must be in the original bottle. Please put medication in a plastic bag. Write the name of the scout, instructions for medication, doctor and phone number, and pack number. All medication must follow this format whether they are routine/scheduled, "as needed", prescription, or over the counter medications. SEND ONLY ENOUGH MEDICATION FOR THE WEEK. Your pharmacy should be able to provide you with an extra bottle and label for this purpose.

Food

All scouts, leaders and visitors need to bring a lunch and drink, marked with name and pack number and placed in a zip lock bag, to camp each day. The Pack will be required to bring a cooler with ice to keep the lunches cold. We suggest you encourage your scouts to limit what they bring for lunch to non-perishable foods. Do not leave any food at camp. Coolers need to be on wheels to be able to be wheeled to the area where we will be conducting camp.

Den Chiefs

If your pack utilizes Den Chiefs, they are encouraged to attend day camp with their pack. Den Chiefs who attend day camp will assist the scouts in their pack and will stay with the pack in all their activities. Den Chiefs cannot be counted as a walking leader. It is expected that all Den Chiefs will demonstrate appropriate Scout behavior at all times.

Achievements at Day Camp

Twin Banks District Cub Scout Day Camp provides numerous opportunities for the scouts to complete rank requirements and earn achievements. To assist you, the camp will provide a list of advancements. The leader will be responsible for identifying what advancement requirements have been done and keep track of them. We recommend that you bring a pencil/pen on a clipboard to note if a scout was not present for a particular advancement activity.

Schedule

We ask your help in making the schedule work. Please follow your schedule. Packs should not go to a program area except during their scheduled time unless approved. Try to have your group at the scheduled activities on time. Dens arriving late cause us to lose valuable time planned for program activities. Also please be aware that at times we may need to change the schedule for a variety of reasons. Please be patient and cooperative and enthusiastic.

Heat

During the camp the weather will most likely be sunny and hot. Please come prepared for inside (air condition) and outside. Wear light loose fitting clothes and closed toed shoes. Make sure everyone, including adults; drink plenty of water frequently to prevent heat related health problems. Water to drink will be available in the building so please bring your drinking cup for when you are outside.

Rain and Severe Weather

Should it rain during camp, the camp will continue to operate since we will be mostly indoors. Should severe weather occur the camp staff will advise you of what actions to take. During camp, there will be a person monitoring the weather and informing the Directors of incoming severe weather. Each Pack Coordinator is responsible for having an "at home contact person". The person monitoring the weather, the 5:1 walking leader/ scout ratio, and the "at home contact person" are all very important aspects of the camp severe weather policy.

Conduct

Cub Scouts and their leaders are expected to conduct themselves in accordance with the Cub Scout Oath and Law. The conduct and discipline of the scouts in your den is your responsibility. If members of your group become disruptive or behave inappropriately you will be asked by a camp staff member to handle the situation. The camp staff will not discipline your scouts unless it is a matter of immediate danger to the scouts, others or camp property.

Telephone

There is not a telephone at the camp for incoming calls. Should anyone need to contact a leader or boy with an emergency message, they should call the Scout Service Center at 901-327-4193 or the Camp Director, Audrey Lott at (901) 830-7437. Remember this is only for extreme emergencies.

First Aid

The camp has arranged for health care in case of accidents and health problems. Should any member of your group, adult or youth, have any accident or health problem no matter how small, they must go to the camp headquarters. In case of minor problems please use the following procedures:

1. Notify the nearest adult camp staff member.
2. Arrange to have another adult watch your group.
3. Bring the person to the camp headquarters immediately. If you need help or feel the person cannot walk, contact the nearest adult camp staff member.

If a serious accident or health problem occurs, use the emergency procedures portion of the guidebook.

CAMP RULES

In order to provide you with a safe, enjoyable camp it is important that everyone, including the scouts, leaders and visitors, follow the rules listed below. Please review them with your scouts, leaders, and any visitor that may attend camp with you each day.

1. **Buddy System:** The buddy system will be in effect at all times. Buddies will be chosen on the first day of camp.
2. **Leaving the Group:** No scout is to leave their group without the permission of the leader and without their buddy. This includes restroom breaks.
3. **Leaving Camp:** No scout will leave camp during the day without the permission of the Camp Director. Scouts will only be released to the person(s) designated in writing by the parent or guardian. A phone call from a parent or guardian **will not be sufficient to release a scout to another person.**
4. **Knives:** Scouts will not be allowed to have or use knives except in certain activity areas and only under the supervision of an adult. Knives brought to camp will be collected at the start of the day and not returned until the end of the day. It will be expressed that they not bring the knife the following days.
5. **Matches:** Scouts will not have or use matches unless under direct supervision of an adult in the course of the activity.
6. **Throwing objects:** The throwing of any object is strictly prohibited unless it is part of a planned activity.
7. **Language:** Swearing, obscene or profane language or gestures is prohibited at all times.
8. **Shoes:** Shoes will be worn at all times.
9. **Leaders:** Leaders are to remain with their groups at all times. If it becomes necessary to leave, have another adult leader watch the group while you are gone. It may be necessary to plan your restroom trips.
10. **Items Prohibited:** Firearms, alcoholic beverages, or any item determined by the Camp Director to be hazardous are prohibited.
11. **Off Limit Areas:** During day camp, portions of the camp may be off limits. Please keep your scouts out of these areas. It is for their safety.
12. **Smoking:** Smoking is prohibited in campsite areas.

DAY CAMP EMERGENCY PROCEDURES

- Emergency Procedures for a **LOST PERSON**: If it is discovered that a child or adult is lost, the following procedures will be followed:
 1. Immediately notify the nearest adult camp staff member
 2. Cease all activities
 3. Assemble your group and take a roll call
 4. Quickly take your group to the assembly area
 5. Report the results of your roll call to the Program Director
 6. Keep your group together, calm and orderly
 7. Follow the directions of the Camp Director

- Emergency Procedures for **FIRE**: In the event of fire the following procedures will be followed:
 1. Follow the direction of a camp staff member who will take you to the designated safe area
 2. Immediately upon arrival at the safe area, assemble your group and take a role call
 3. Report any missing person to the Camp Director immediately
 4. Keep your group together, calm, and orderly
 5. Follow directions of the Camp Director

- Emergency Procedures for **SERIOUS ACCIDENT OR HEALTH PROBLEM**: Should a serious accident or health problem occur the following procedures will be used:
 1. Immediately notify the nearest adult camp staff member
 2. Remain with your group; keep them together, calm, and orderly
 3. Continue with camp activities unless directed to do otherwise by the camp staff or camp Directors.

**COUNCIL CUB SCOUT DAY CAMP
EMERGENCY PHONE NUMBERS**

911

FIRE DEPARTMENT	(901)458-3311
POLICE DEPARTMENT	(901)543-6333
AMBULANCE	(901)458-3311
LE BONHEUR CHILDRENS HOSPITAL	(901)287-5437
EMERGENCY ROOM	(901)287-6112
SHERIFF'S DEPARTMENT	(901)379-7625

**(REMEMBER 911 WILL WORK
FOR POLICE, SHERIFF & FIRE)**